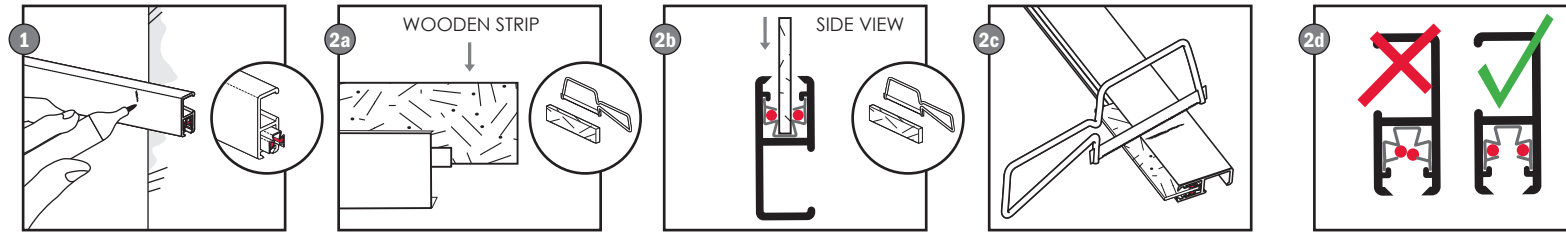


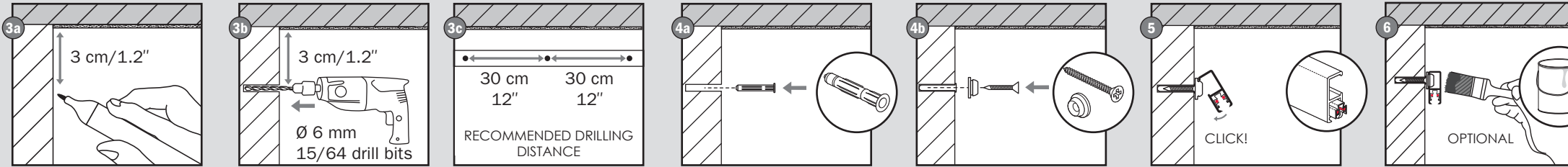
# STAS multirail 12V manual

www.picturehangingsystems.com

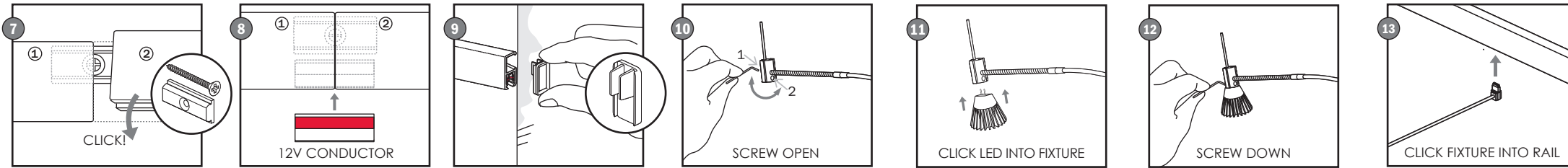
## A Cut the rail to size



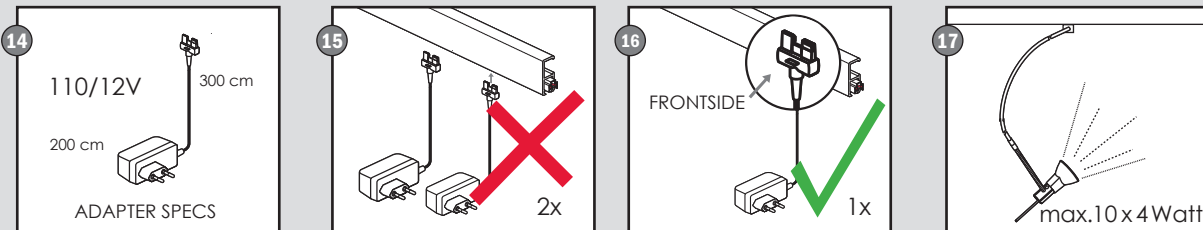
## B Mount the rail



## C Assemble the light fixture

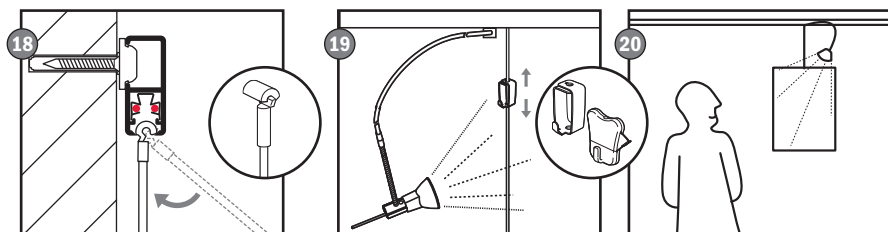


## D Connect the adapter

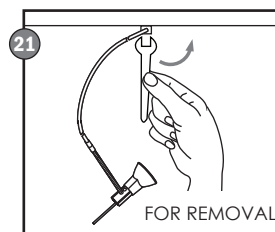


- Do not short-circuit the output terminals
- Never use more than one adapter when connecting the rails
- Ensure the correct voltage is used as continuous excess voltage could damage your multirail system
- Maximum load: 40 Watt
- Use max. 10 STAS 4 Watt PowerLEDs and max. 17.5 yards (16 m) of rail per adapter.

## E Hang art



## F Remove

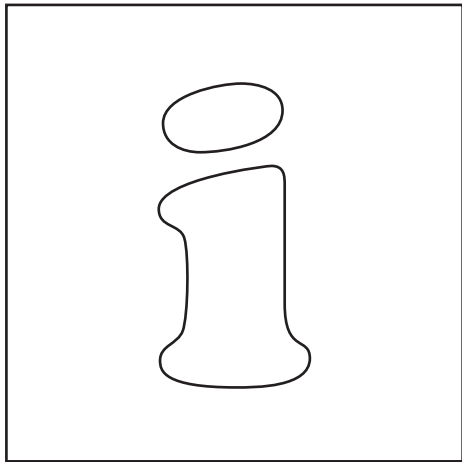


www.picturehangingsystems.com

YouTube

www.youtube.com/user/STAShangingsystems





## STAS picture hanging systems



[www.picturehangingsystems.com](http://www.picturehangingsystems.com)



[www.youtube.com/user/STAShangingsystems](http://www.youtube.com/user/STAShangingsystems)



### IMPORTANT SAFETY INSTRUCTIONS

Instructions for all STAS picture hanging systems pertaining to a risk of injury to persons

- Keep perlon cords and steel cables out of reach of children.
- Indoor use only.
- Do not use in humid areas.
- Do not make adjustments to the system.
- Always choose screws and plugs that are specifically suited for the respective material.

Extra instructions for all STAS picture hanging systems with 12 V system pertaining to a risk of fire, electric shock, exposure to excessive UV radiation, or injury to persons:

Caution: Before starting, turn off the power at the main circuit panel.

- The total wattage may never exceed the capacity of the transformer.
- Do not short-circuit the output terminals.
- Ensure the correct voltage is used as continuous excess voltage could damage your multirail system.
- The transformer cables may not be extended or shortened in any case.
- Turn off the system/unplug and allow to cool before replacing the bulb.
- Bulb and enclosure could get hot.
- Do not look directly at the lighted bulb.
- Keep hot bulb away from materials that may burn.
- MR11 – GU4 is the only suitable lamp for STAS armatures.
- Do not operate the unit with a missing or damaged bulb.
- Keep out of reach from children.
- Deviation from the assembly instructions may result in a risk of fire or electric shock.
- When using more than one adapter you need to create independent circuits. Make sure you never connect the rails with more than one adapter at a time! Otherwise this will result in a short circuit.
- Insert the wooden strip before sawing/shortening the rail to prevent damage to the power lines.
- Never make any adjustments to the system other than stated in this manual.
- Always use original STAS products, parts, lighting fixtures and (LED) lamps.

### Disclaimer

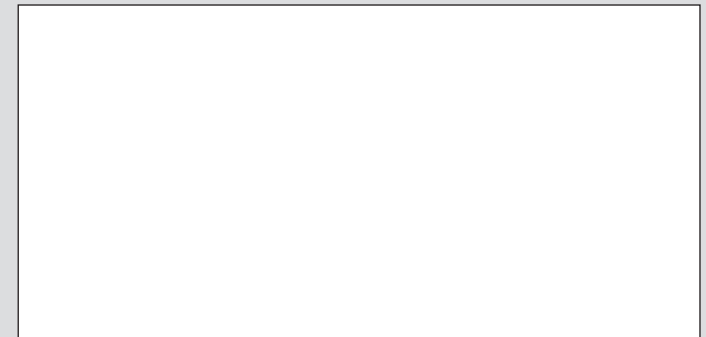
This manual has been put together with great care. Nevertheless, the manual may still contain type-setting and/or printing errors. Obviously, STAS accepts no liability for errors of this nature. In conjunction with its policy of continual product improvement, STAS reserves the right to implement changes to the range, models, colours, etc. as and when circumstances make this necessary. Correct installation of STAS hanging systems is of essential importance. The installer must assess the strength of the walls or ceilings in the locations where the hanging systems are to be fitted, and the expected loads, and take account of and observe all relevant local regulations and legislation. If necessary, the installer must use fasteners that are more suitable for the task. The installer always has final responsibility for correct fitting, assessment of the walls or ceilings and the choice of fasteners. Maximum weights are indicated in the catalogue. STAS refuses all liability for improper use (including but not limited to not following the Safety Instructions) or when the products are subjected to a higher load than advised. STAS also refuses liability for direct, indirect or consequential damage arising from attachment to structures of insufficient strength, combinations with systems other than STAS picture hanging systems or unauthorised combinations of STAS picture hanging systems.

### Warranty

STAS picture hanging systems guarantees the quality of the supplied hanging systems and the quality of the materials used. This warranty runs for a period of five (5) years from purchase of the hanging system and one (1) year for all STAS multirail 12 V components. Failure to comply with the cautions stated in this manual may affect your safety and will void your warranty.

Not covered under the terms of the warranty are defects arising which are attributable in whole or in part to incorrect installation or incorrect use of the system, other than mentioned in the manual. Should you wish to claim under the warranty, please contact your dealer. Please carefully retain your invoice with this warranty!

**Your STAS dealer:**



# STAS Power Supply Model: VT20900

## Features:

- Universal AC input / Full range
- Adjustable output voltage and current level
- Protections: Short circuit / Over current / Over voltage / Over temperature
- Cooling by free air convection
- Built-in constant current limiting circuit
- Fully isolated plastic case with terminal block style of I/O
- Built-in active PFC function, comply with EN61000-3-2 class C (>75% load)
- Class 2 power unit
- Pass LPS
- 100% full load burn-in test
- High reliability
- Suitable for LED lighting and moving sign applications
- Compliance to worldwide safety regulations for lighting



## Specifications:

Input AC Voltage : 90-264 VAC / 47-63 Hz  
 Output DC Voltage : 9-12 V constant current  
 Rated Current output : 3.8 A  
 Rated Power output : 45.6 W  
 Dimensions : 181.5 x 62 x 35 mm ( L\*W\*H)

## CAUTION

1. Do not short-circuit the output terminals.
2. Ensure the correct voltage is used as continuous excess voltage could damage your multirail system
3. Do not attempt to open this unit.

## Safety precautions:

RISK OF ELECTRIC SHOCK  
**DO NOT OPEN**



CAUTION To reduce risk of electric shock, this product should ONLY be opened by an authorized technician when service is required. Disconnect the product from mains and other equipment if a problem should occur. Do not expose the product to water or moisture.

## Warranty:

No guarantee or liability can be accepted for any changes and modifications of the product or damage caused due to incorrect use of this product.

## General:

- Designs and specifications are subject to change without notice.
- All logos, brands or brand logos and product names are trademarks or registered trademarks of their respective holders and are hereby recognised as such.
- This manual was produced with care. However, no rights can be derived. STAS can not accept liability for any errors in this manual or their consequences.
- Keep this manual and pac.

## Safety standards:

UL1310, TUV EN61347-1, EN61347-2-13, CAN/CSA C22.2 No. 223-M91), J61347-1, J61347-2-13 approved

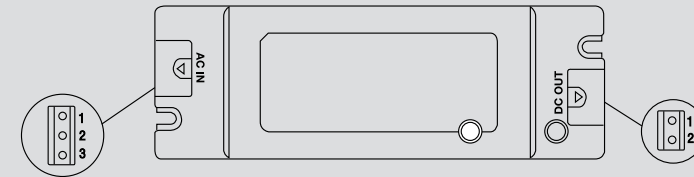
## EMC Emission:

Compliance to EN55015, EN55022 (CISPR22) Class B, EN61000-3-2 Class C (>75% load) EN61000-3-3

## EMC Immunity:

Compliance to EN61000-4-2,3,4,5,6,8,11, EN55024, EN61547, light industry level, criteria A

## Adapter:

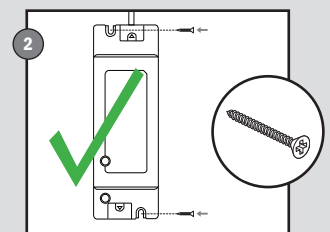
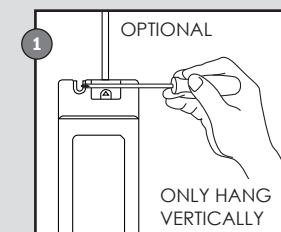


## AC - in 110 V

Pin No.	Assignment	
1	AC/L	AC-L Brown
2	AC/N	AC-N Blue
3	FG ↓	FG - grounded

## DC - out 12 V

Pin No.	Assignment
1	+V = Brown
2	- V = Blue



## STAS picture hanging systems



[www.picturehangingsystems.com](http://www.picturehangingsystems.com)



[www.youtube.com/user/STAShangingsystems](http://www.youtube.com/user/STAShangingsystems)

